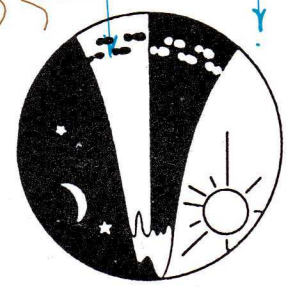


# CLARK KENT

SPRING 24 HOUR ROGAINE 20 - 21 AUGUST 1994

W.A.R.A. STATE CHAMPIONSHIPS



SCALE 1 : 50000

Contour Interval 10 metres

Acknowledgments to CALM, DOLA, and many thanks to the Farmers

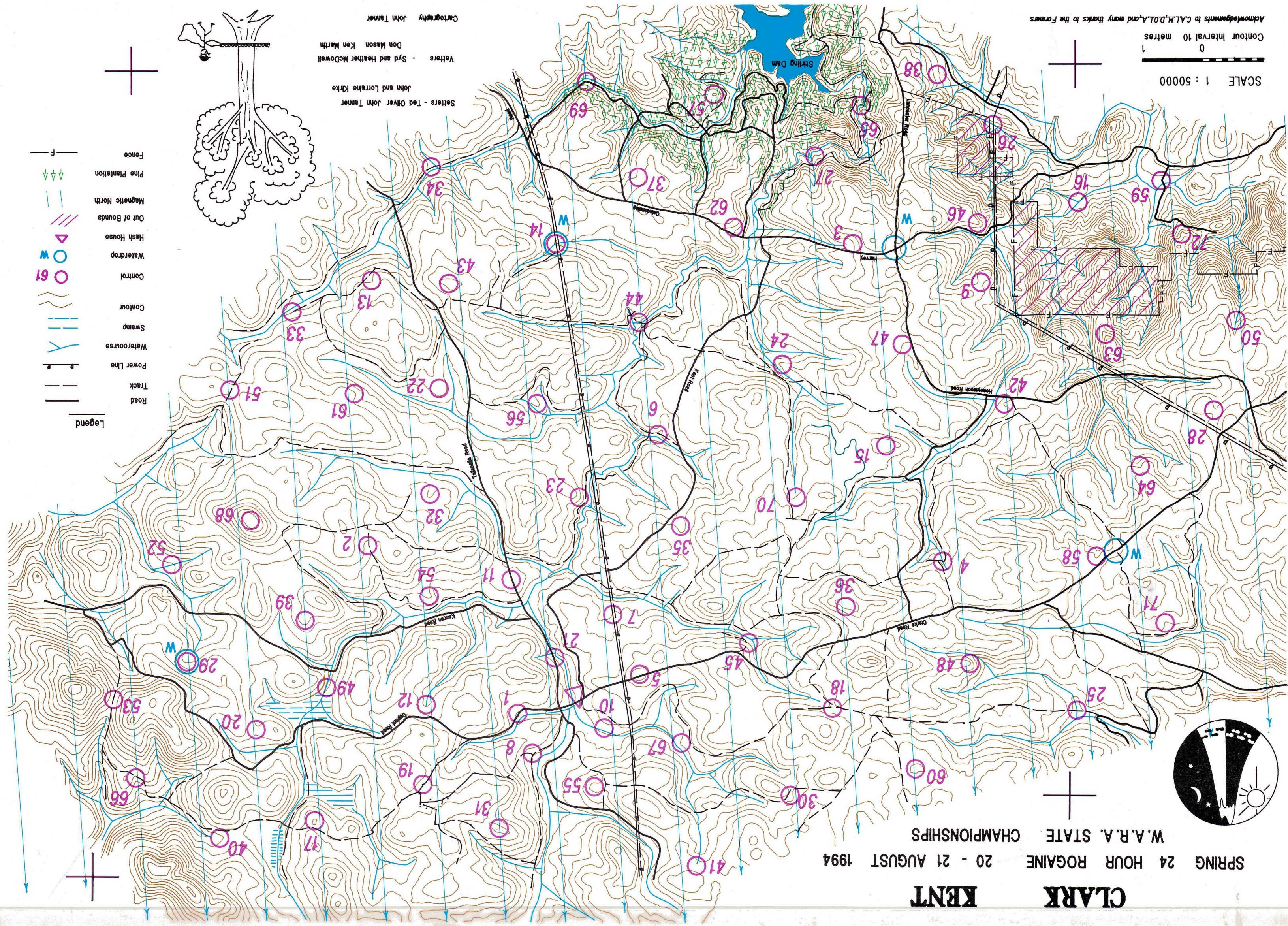
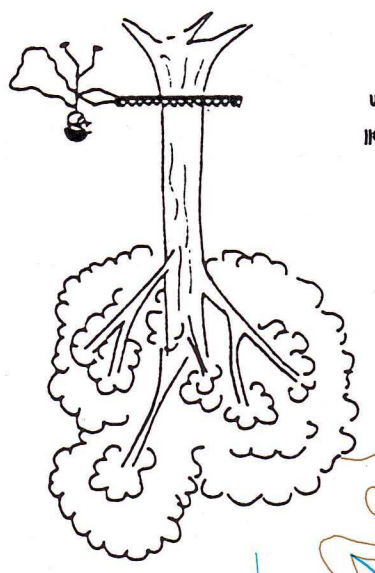
Settlers - Ted Oliver John Tanner

Writers - Syd and Heather McDowell

Don Mason Ken Marth

Cartography John Tanner

- Road
- Track
- Power Line
- Watercourse
- Swamp
- Contour
- Control
- Waterdrop
- Hash House
- Out of Bounds
- Magnetic North
- Pine Plantation
- Fence



**CLARK KENT 24 HOUR ROGAINE  
WA STATE CHAMPIONSHIPS 20,21 AUGUST 1994**

POINTS CONTROL		DESCRIPTION	POINTS CONTROL		DESCRIPTION
20	1	ROAD/WATER COURSE CROSSING 120M @ 90°	60	37	HEAD OF THE GULLY ON "A" TRACK
20	2	HEAD OF THE GULLY ON THE TRACK	60	38	'A' DAM - WEST SIDE
20	3	HEAD OF THE GULLY ON 'A' TRACK	60	39	THE BROAD SPUR IN A SMALL OPEN CLEARING
20	4	THE TRACK/WATER COURSE CROSSING	60	40	HEAD OF THE BROAD SHALLOW GULLY
20	5	THE SUMMIT	60	41	HEAD OF THE WC EDGE OF THICK VEGETATION
20	6	EDGE OF THICK VEGETATION NEAR CREEK WC/JNT	60	42	THE 'LITTLE' SPUR
30	7	PYLON 169 - 120M DUE EAST	70	43	THE SUMMIT
30	8	THE TRACK JUNCTION	70	44	OUTSIDE CLARK KENT'S 'MODIFIED' PHONE BOOTH
30	9	THE SADDLE	70	45	MIDDLE OF A MAN MADE CUTTING 50M LONG
30	10	'A' TRACK BEND	70	46	THE SPUR
30	11	THE BROAD SPUR/ROAD INTERS.EAST SIDE	70	47	'A' TRACK/WC JUNCTION
30	12	HEAD OF THE GULLY	70	48	THE SPUR
40	13	'MIDDLE' OF THE GULLY	70	49	'A' "FORD" - WEST SIDE
40	14	POWERLINE/WATER COURSE JNT. -60M @ 30°	70	50	'A' TRACK/WC JNT
40	15	THE SUMMIT	70	51	THE SADDLE - BESIDE BORE HOLE
40	16	THE CREEK JUNCT	70	52	'A' TRACK/WC JUNCTION
40	17	THE KNOLL - ON BIG OLD JARRAH	70	53	THE SADDLE
40	18	THE SADDLE	70	54	THE SPUR
50	19	BLAZED TREE - 50M @ 310°	80	55	THE SPUR
50	20	THE SADDLE	80	56	THE SPUR
50	21	'NO HANDRAIL' FOOTBRIDGE - SOUTH END	80	57	THE KNOLL
50	22	THE BROAD SPUR - IN AN OPEN AREA	80	58	HEAD OF THE GULLY
50	23	THE SPUR - 50M DOWN	80	59	FENCE CORNER - STH SIDE OF THE BRIDGE
50	24	THE SPUR	80	60	THE SUMMIT
50	25	THE TRACK/CREEK JNT - 35M @ 230°	90	61	THE SPUR
50	26	POWER/LINE/CREEK CROSSING-100 @ 285°	90	62	SALMON GUM STAND - 20M IN FROM SW CORNER
50	27	'A' ROCKY RIVER BEND - NORTH SIDE	90	63	'A' KNOLL
50	28	BROAD SADDLE IN A CLEARING	90	64	HEAD OF THE GULLY ON 'A' TRACK
50	29	GRAVEL 'CAMPING' CLEARING - EAST SIDE	90	65	TOP OF THE FALLS - WEST SIDE 20M FROM RIVER
50	30	THE SADDLE	90	66	HEAD OF THE GULLY
60	31	THE BROAD KNOLL	100	67	THE SPUR
60	32	HEAD OF THE GULLY	100	68	THE SUMMIT - OLD LOOKOUT TREE
60	33	END OF THE TRACK	100	69	ROAD BEND - 35m @ 100°
60	34	BLAZED TREE - 160M @ 150°	100	70	HEAD OF THE WC - WEST EDGE THICK VEGETATION
60	35	HEAD OF THE GULLY	100	71	HEAD OF THE GULLY
60	36	THE SUMMIT - NTH EDGE OF THICK VEG	100	72	INSIDE THE "OLD DODGE" VIEWS

**Total Points 4320**